

Fiji 2016

- Medical Mission in Paradise





This view shows that geologically, Fiji is on the same volcanic shelf as New Guinea and New Zealand. And like New Zealand, it get lots of earthquakes.

Papua New Guinea

Australia

Fiji

New Zealand

Bismarck Sea

Solomon Sea

Coral Sea

Tasman Sea

Arafura Sea

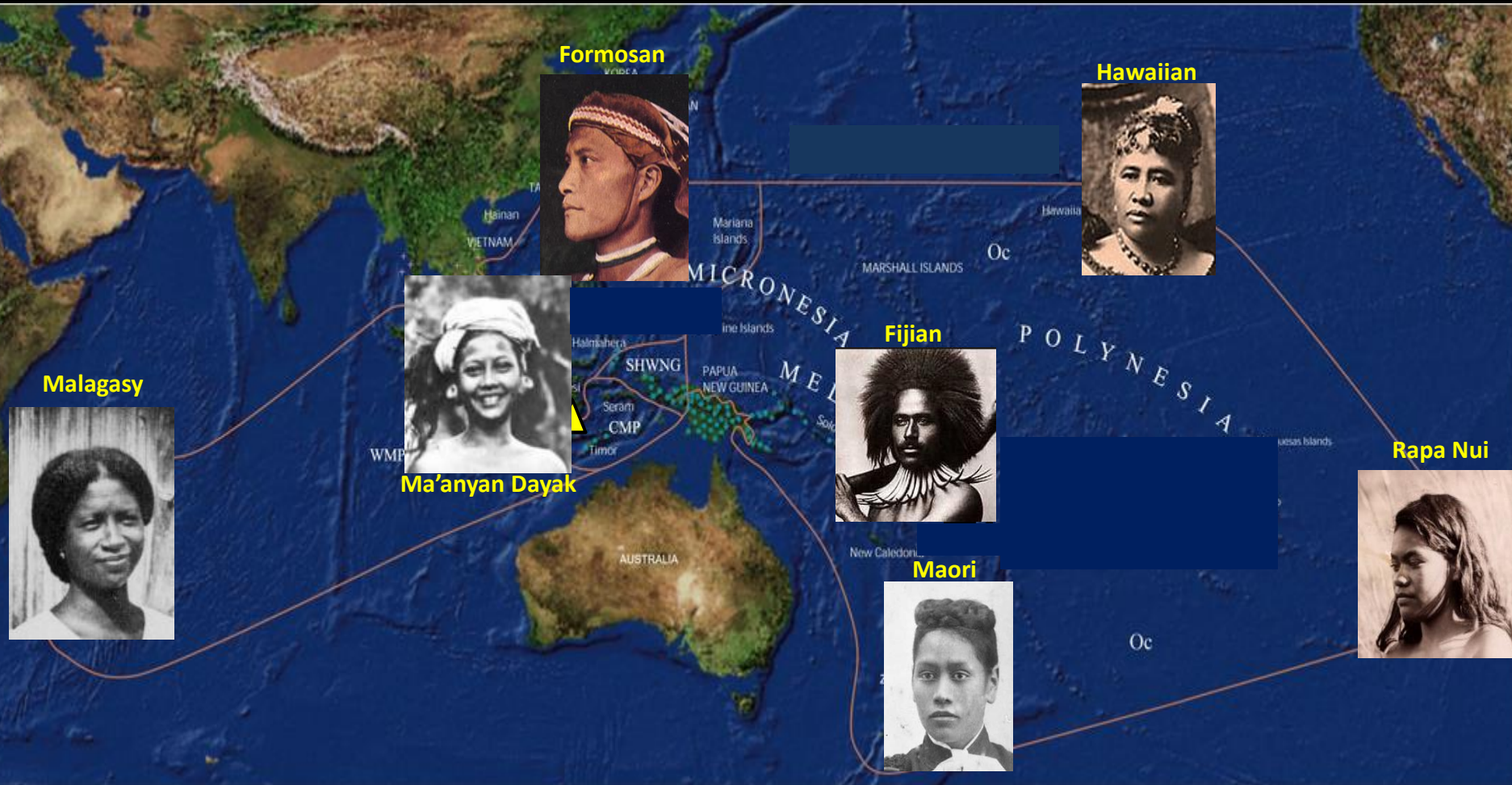
Timor Sea

Great Australian Bight

Fiji was settled from New Guinea about 3000 years ago, and is now part of what is called Melanesia. The islands to the west, now called Polynesia, were settled through the island chain called Micronesia about 1000 years ago. The Polynesians who inhabit these western islands are genetically very different from the Melanesians of Fiji.



Austronesian People



Formosan

Hawaiian

Malagasy

Ma'anyan Dayak

Fijian

Rapa Nui

Maori

The Polynesians in Rapa Nui, Hawaii and New Zealand all have a similar appearance due to their common ancestry. But the Melanesians, like the Fijian warrior in the picture, look entirely different from the Polynesians, even though there has been some interbreeding between Fijians and Polynesian Samoans. What ties Melanesians and Polynesians together most clearly is just the similarity of their languages.

The Technology that Settled Austronesia

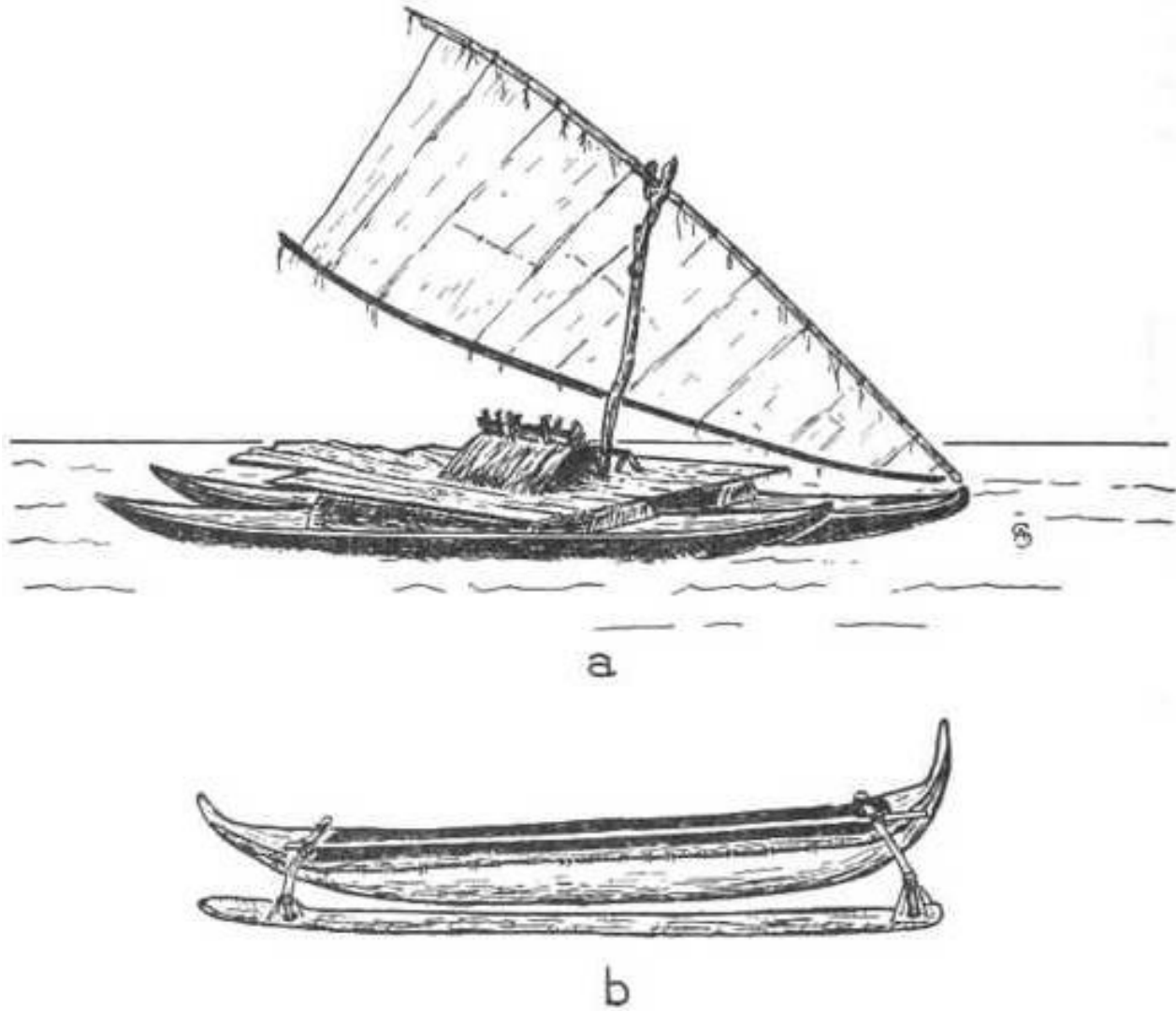


Fig. 43. Polynesian canoes.
a, double canoe, Tonga (Hornell after Cook, 51a, fig. 192); *b*, outrigger canoe, Mitiaro, Cook Islands.

Here is a dugout canoe I observed on the beach at Buca Bay, Vanua Levu, Fiji in 2016. It's very similar to the ancient canoe design that brought people to Fiji in the first place.





NADI

SAVUSAVU

LAX

We flew on a modern jet from Los Angeles to Nadi (10+ hours)...

We switched to this De Havilland Twin Otter for the final leg of the trip.



No cockpit door on this flight. No cabin air circulation either!



View from the air as we headed north to our destination, the northern island Vanua Levu

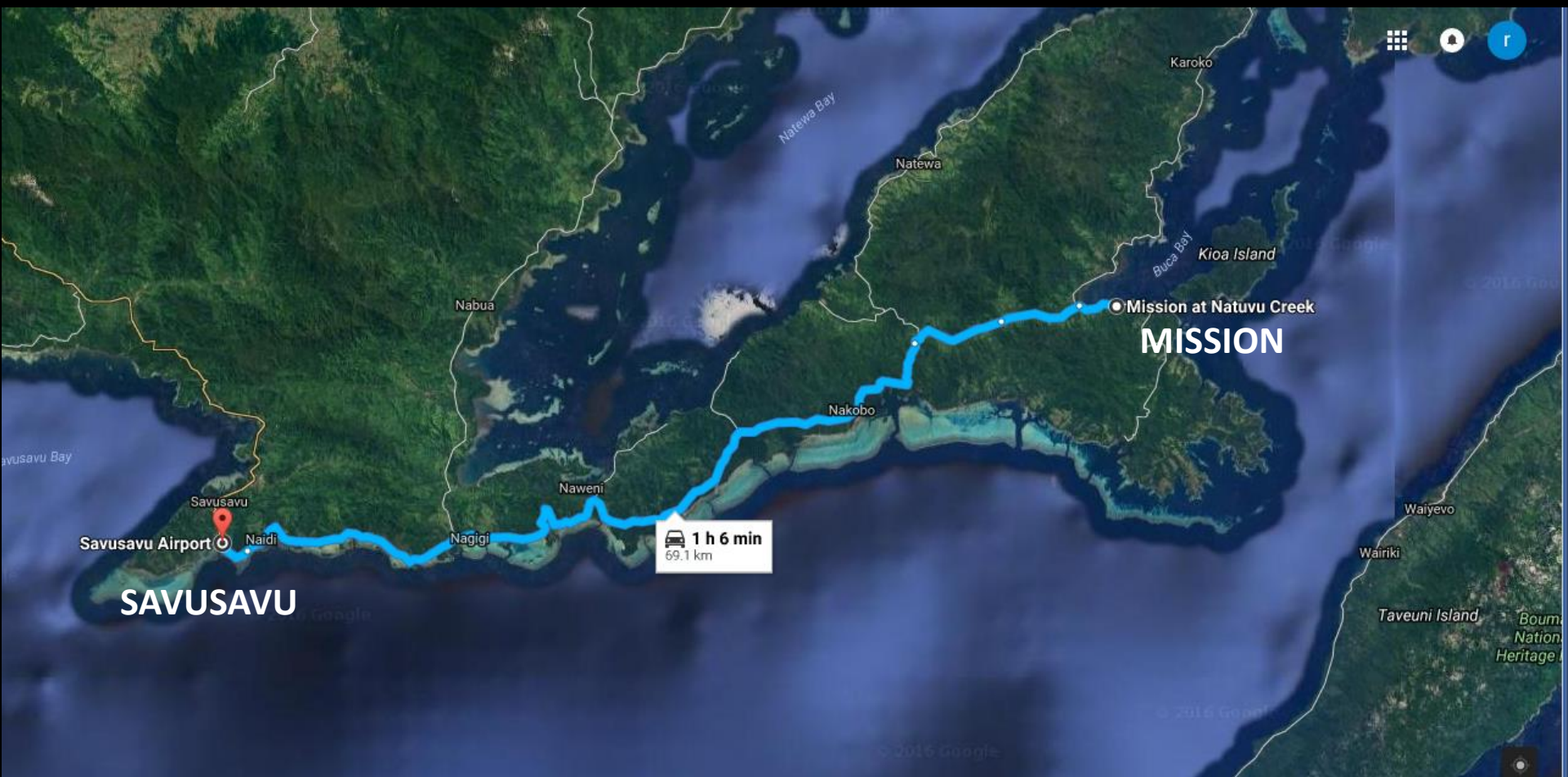




We landed at the small but serviceable airport at Savusavu




From the airport, we travelled by taxi to our destination, the Mission at Natuvu Creek



SAVUSAVU

MISSION

 **1 h 6 min**
69.1 km

The Mission is a facility providing medical services and Seventh-day Adventist religious connection to the many villages in this area.



Buca Bay



It is located on a former coconut plantation on lovely Buca Bay (pronounced "Bootha")



Mission Chapel

Mission Founders and Owners



Tom Tooma MD,
Co-Founder
**Ophthalmology
Director**



Marta Tooma DDS,
Co-Founder
Dental Director

The Resident Managers

Anibal Kalbermatter, MD



At the time of our visit, the mission was managed by Dr. Anibal Kalbermatter and his wife Nani, a registered nurse.

Together, and with the help of their native staff, they manage the property (750 acres) which includes the clinic, residences for staff and guests; dining facility for guests; electrical, water, and sewage facilities, as well as a garden, hardwood plantation and sawmill.

Nani Kalbermatter, RN



Our Accommodation

Hawthorne House

Dr. Randall Goodman

**Our volunteer group was
Organized and led by
Dr. Randall Goodman,
An eye surgeon from
Santa Maria, California**





The eye surgery suite is well-equipped with modern surgical equipment and air conditioning. Here, Dr. Goodman performs surgery with the aid of a microscope and the help of two nurse/assistants.

Most operations performed over the week (78 surgeries) were for cataracts. But glaucoma stents were installed, and even one corneal transplant. Overall, 150 eye patients were seen in 1 week.



There were lots of satisfied customers who received modern eye surgery at no cost



Of course, there was a long queue for surgery



And, as in any medical clinic, there needed to be some sorting out, taking of medical histories, and vision testing. This was done by volunteers.



Dr. Sonny Higginbotham



I got to look over the shoulders of both Dr. Goodman and his fellow volunteer, Dr. Sonny Higginbotham, as he and his team performed the surgery.

Dr. Bob Kitto and Sylvia Kitto

Eye surgery wasn't the only thing going on. Two dental teams performed about 150 procedures (including extractions) over the weeklong period. Here Dr. Bob Kitto and his wife Sylvia are hard at work.



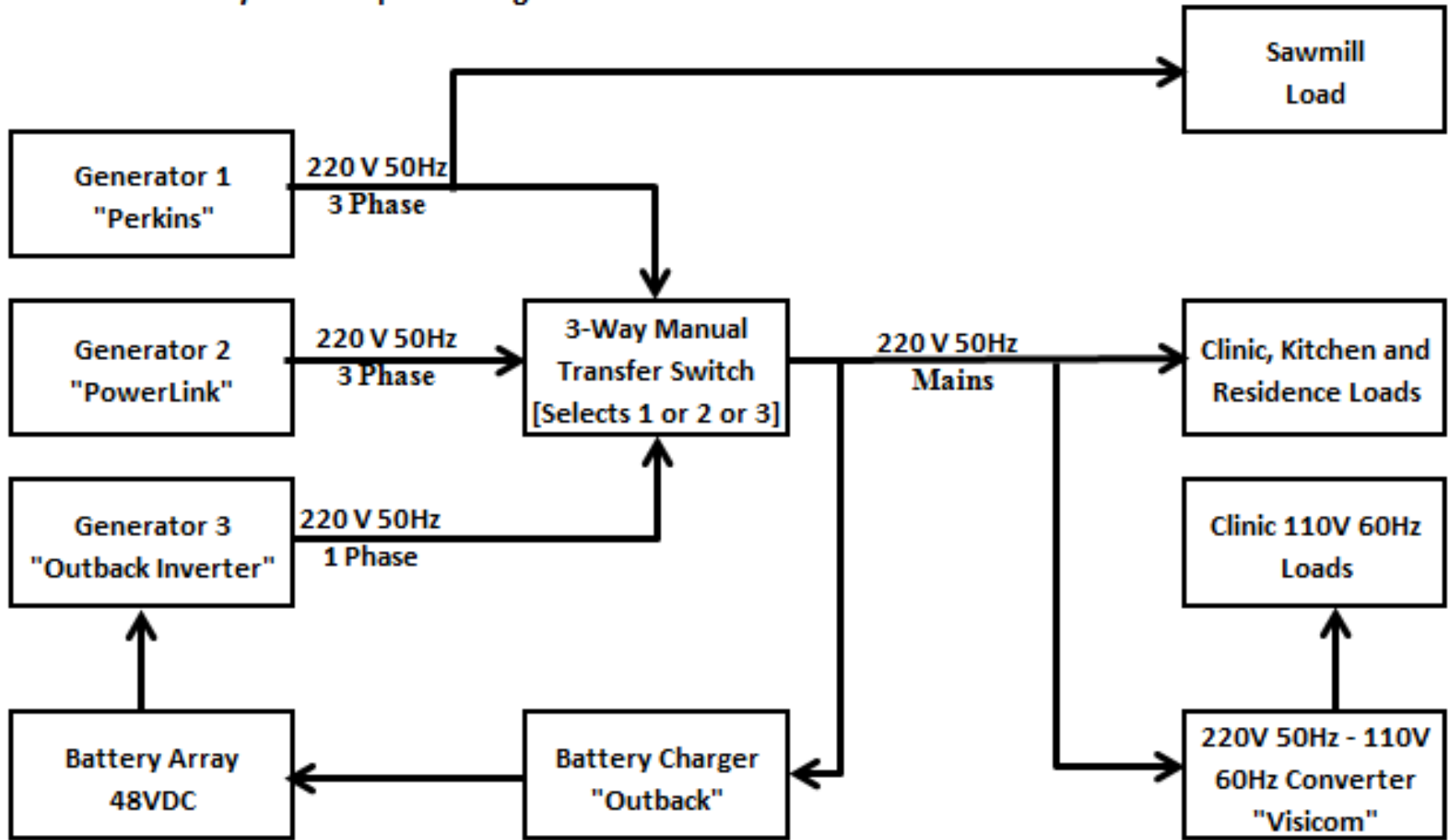
Dr. Doug Ng, who volunteers at Adventist Missions worldwide, was also on hand to provide dental services.



The 750 acre mission property contains a number of mahogany and raintree specimens which are being sustainably harvested. Replacement trees are being planted as lumber is produced the Mission's own sawmill.



MNC Electrical System Simplified Diagram



All that air conditioning, medical, dental, and sawmill equipment requires electricity, which is generated on-site by one of three methods: One of two diesel-electric generators or a battery-powered backup system. I surveyed the system and generated this diagram.

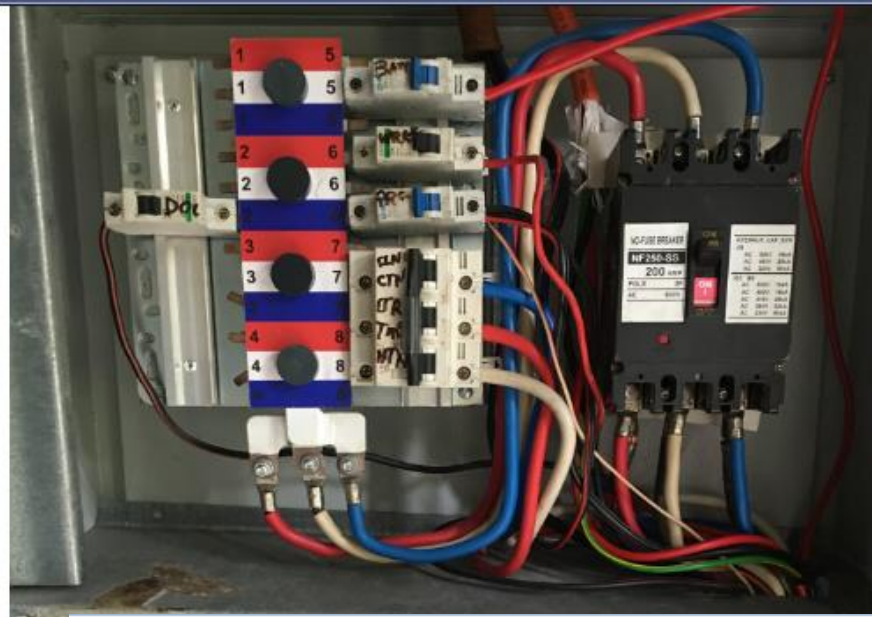
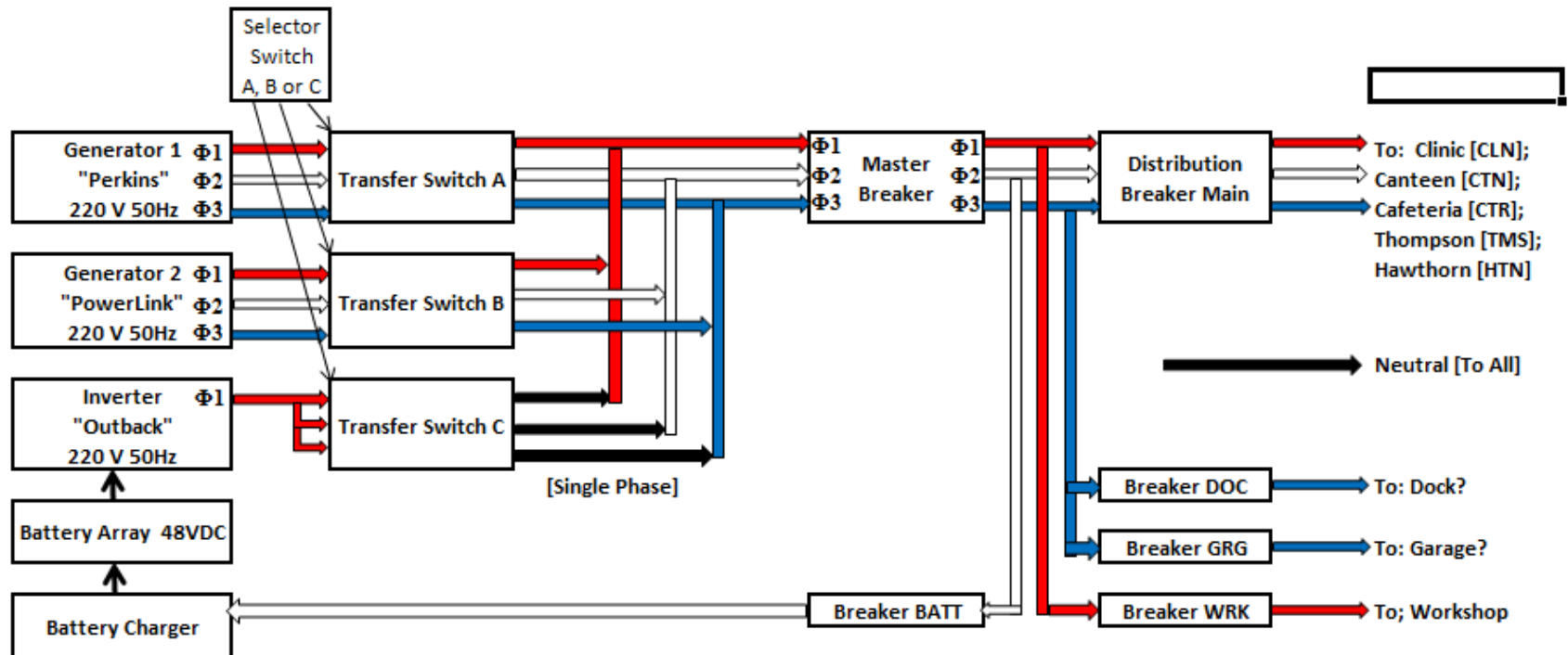
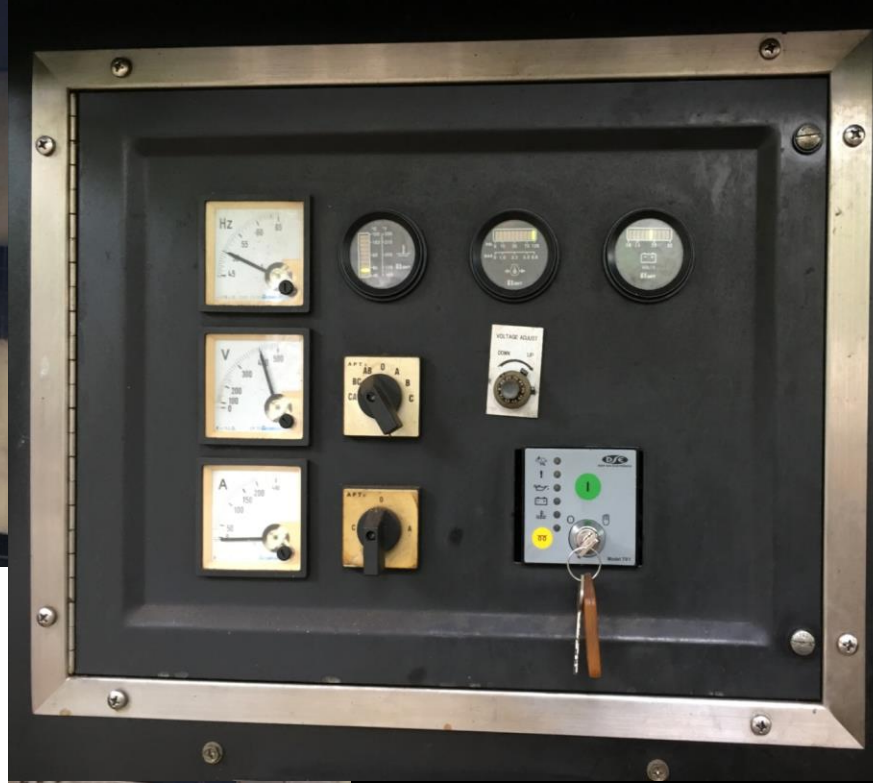


Diagram of Distribution Box:



I traced the wiring for the electrical system, and generated this diagram for future reference.



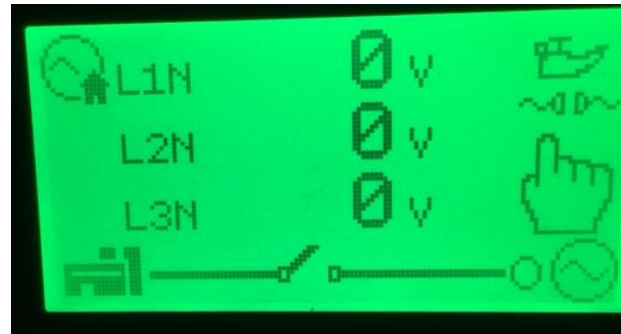
I had purchased a replacement module (right) for a failed controller, which we were able to install on the first day, solving the startup problem on the older "Perkins" system.



PowerLink Generator



Display post-failure



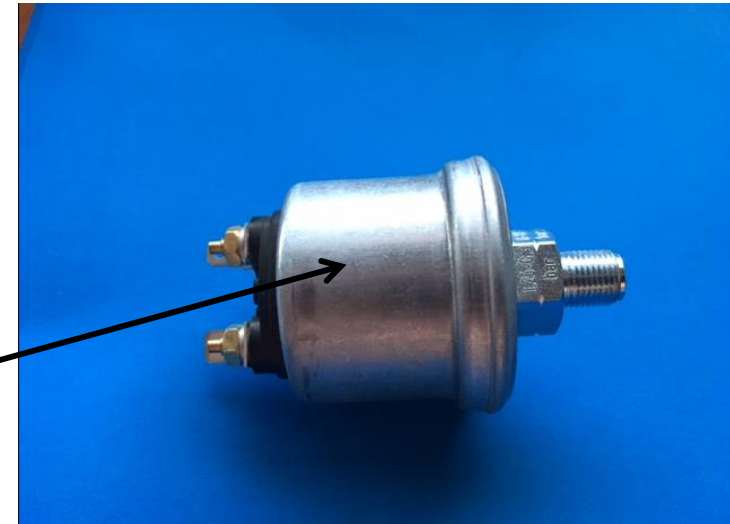
“Open Circuit
Oil Pressure
Sensor”

Product Model: GMP20PXS



Old Oil
Pressure Sensor

New Oil
Pressure Sensor



I also worked with the maintenance guys to diagnose a startup problem on the newer generator, and to get a replacement part delivered by plane and by public bus. On the last day of our trip, we installed the part and solved the problem.

Maekeli Levani



I worked with Maekeli “Mike” Levani, the most versatile maintenance guy at the Mission

“Mike” doing an emergency repair



Whether it was routine maintenance or emergency repairs (as in this case), people would say “Call Mike”. It was a real pleasure to work with him.

Facts about Fijians

- A very primitive Society known for cannibalism well into 19th century
- Evangelized by Wesleyan Missionaries in 19th c.
- Colonized by British 1874 – 1970
- British brought Gujaratis for Sugar Plantations
- Today, Fiji's population is half Melanesian, half Indo-Fijian (Gujarati)
- Most Melanesians are Christian, most Indians Hindu

**Fijian Warrior
1870s**



Modern Fijian, 2016



**Today's Fijians are a cultured
and peaceful people**

These Melanesian ladies are from a nearby village



“Typical” Kid at Mission



“Atypical” Kid at Mission



Childhood Blonde Melanesians



**These Kids are from New Guinea
Blondenness is Endemic
Due to Entirely Different Gene from European Blondenness**

Preparing the Lovo Feast



Dance Performers before the Feast



Dancing after the Feast



Dangerously Overloaded Zipline





Photographer Kyle Stock took this picture of me kayaking on Buca Bay just before dawn



And this amazing shot of the moon and stars over Buca Bay