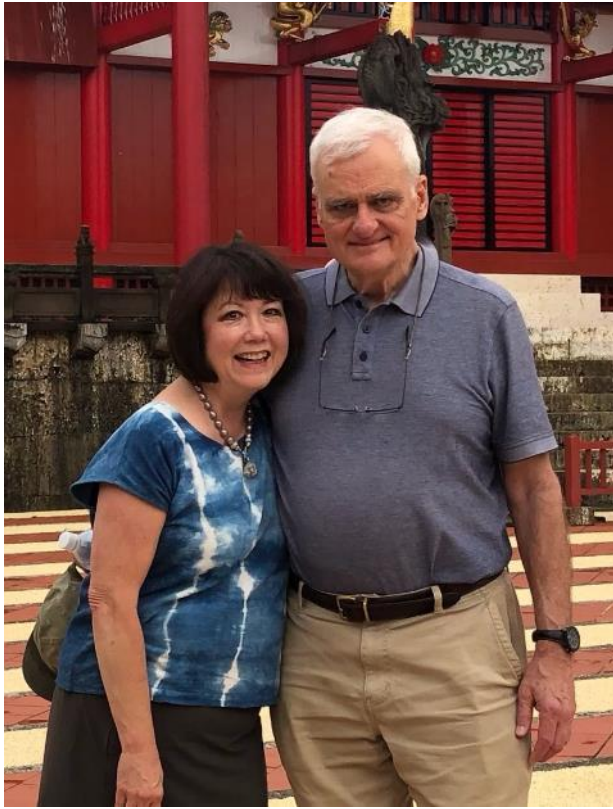


A Visit to Okinawa and Tokyo

October 2019

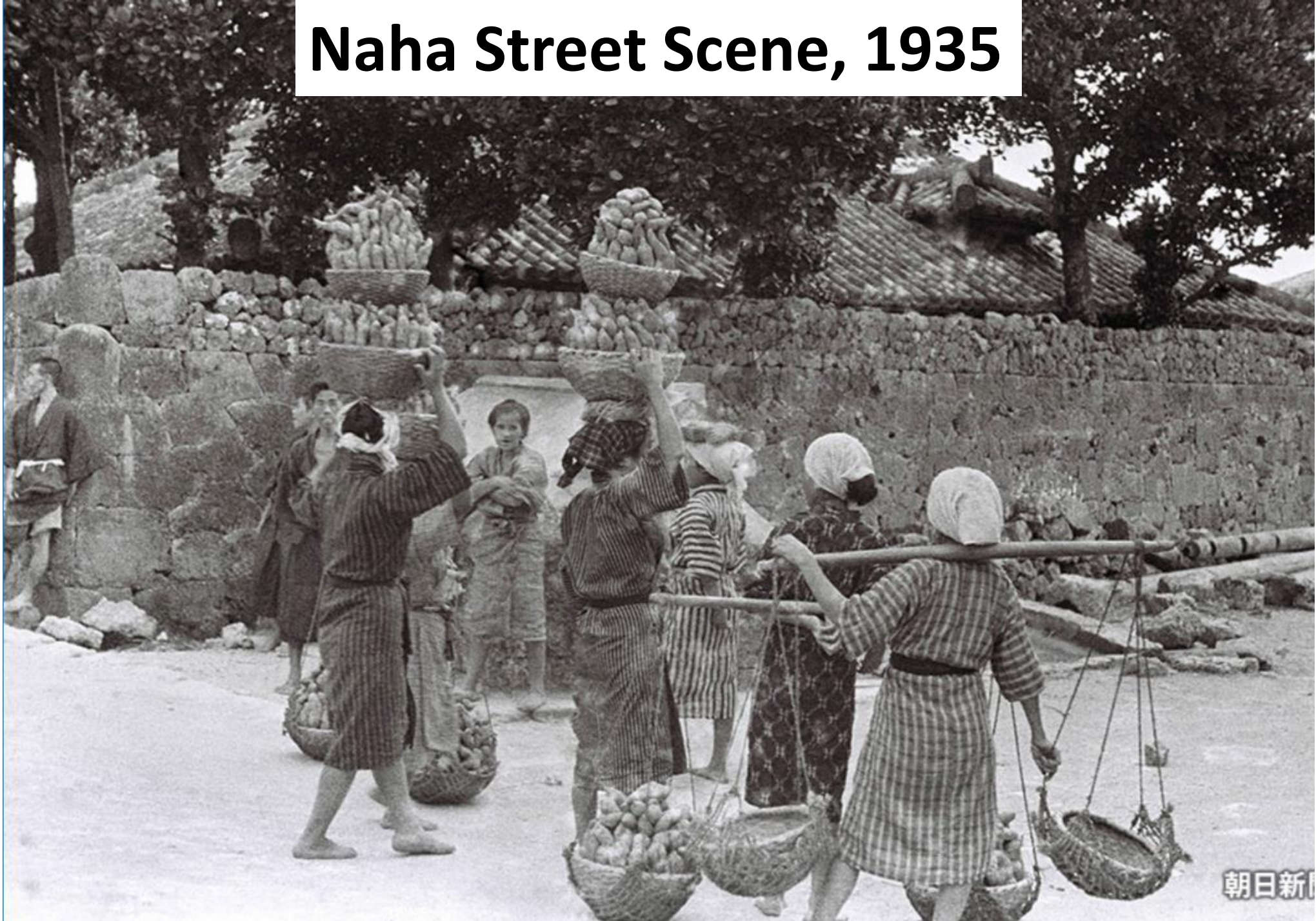


Cynthia, Rory



Kenny, Adele

Naha Street Scene, 1935



Naha Post-Battle, 1945



Naha 2019



Naha 2019



Okinawa Prefectural Museum



Okinawa Prefectural Museum



Traditional Social Classes



Samurai

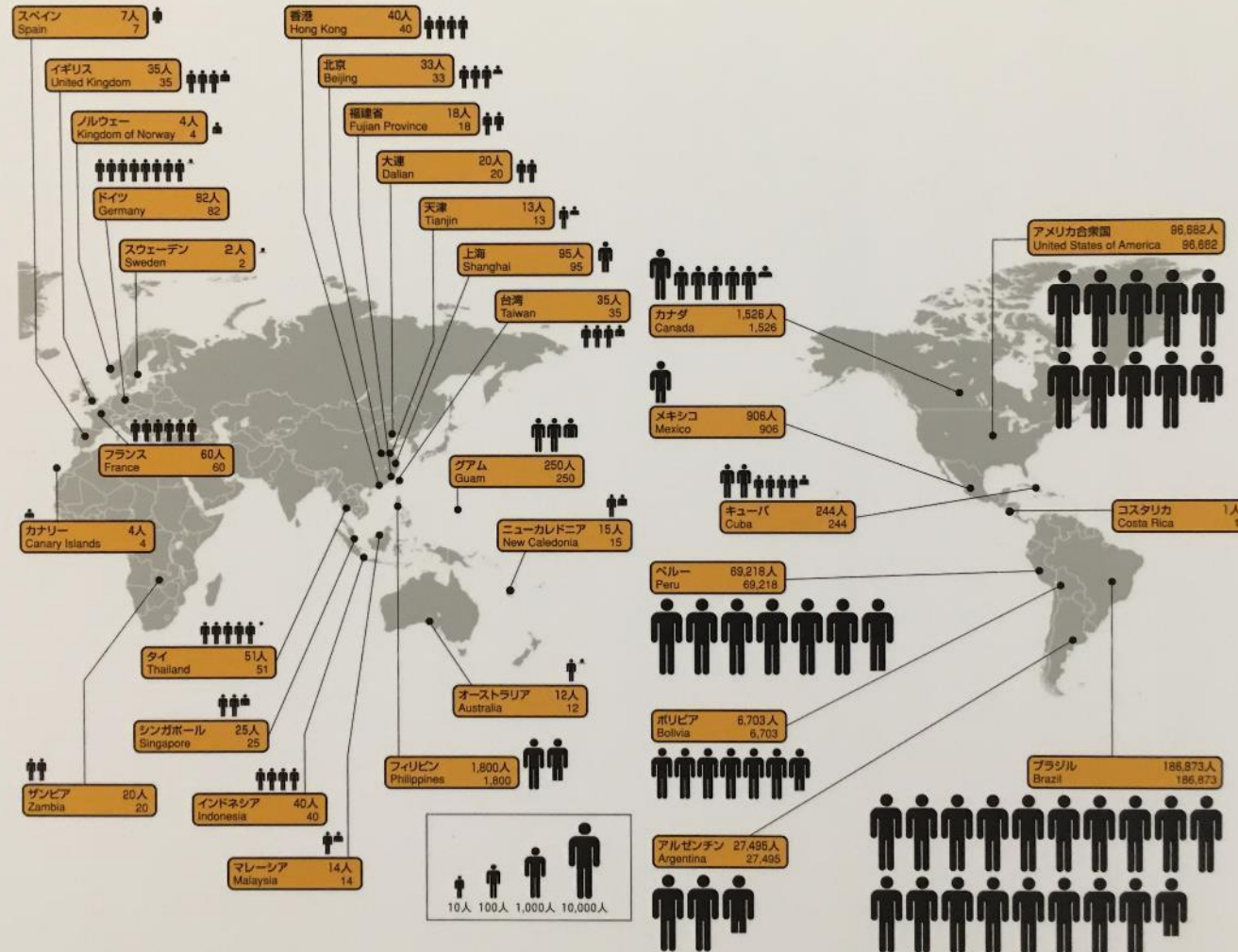
Ruler

Peasant

The 20th Century Okinawan Diaspora

世界のウチナンチュ分布図

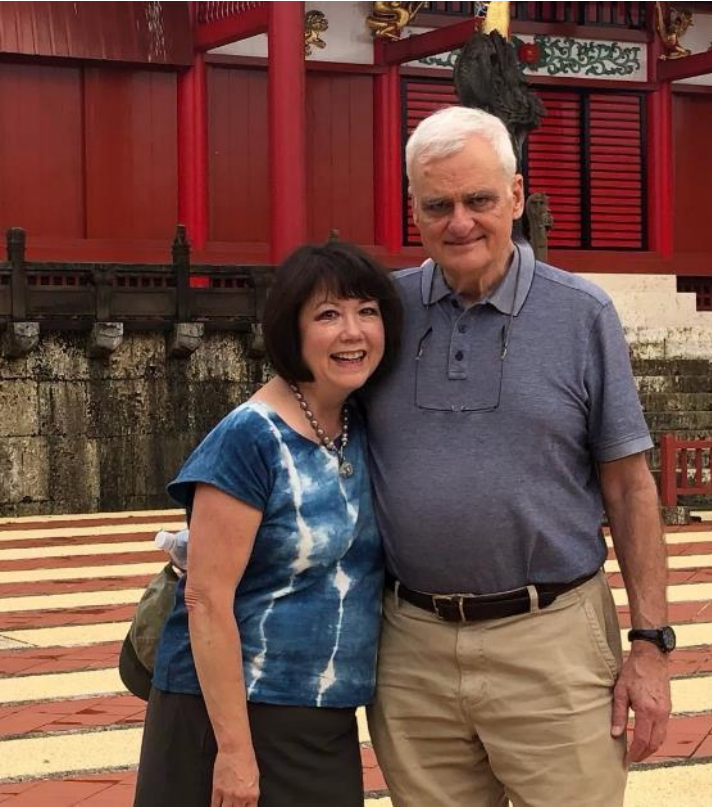
Uchinanchu Distribution Map of the World



Shuri Castle, October 20, 2019



Shuri Castle, October 20, 2019



Cynthia, Rory



Kenny, Adele

Shuri Castle Dancers, October 20, 2019



Shuri Castle: Bejewelled Royal Crown



Prefectural Peace Museum, October 21, 2019



Itoman Fisherfolk, 1935



Itoman Fish Market, October 21, 2019



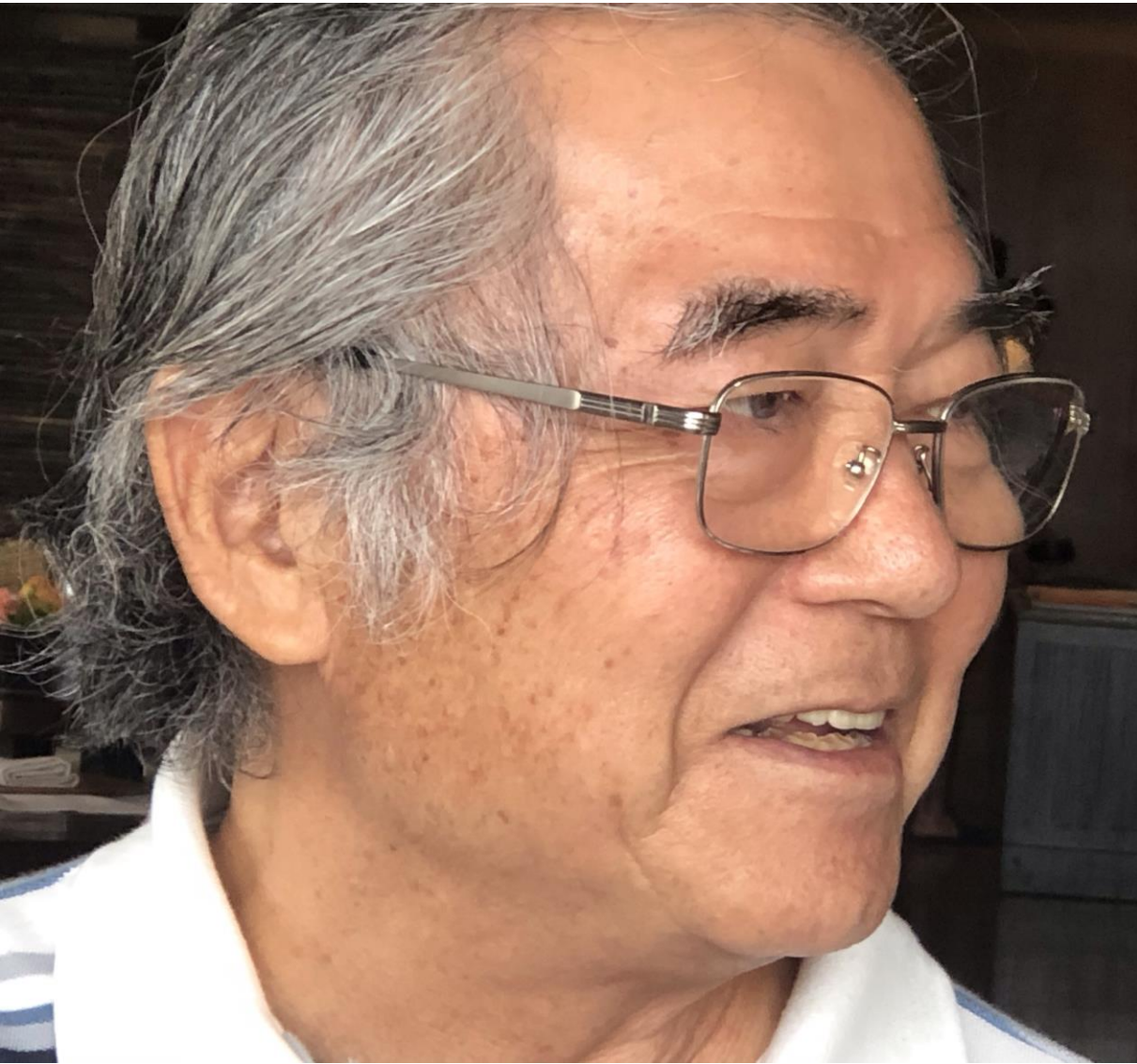
Adele Destroys a Fish in Itoman, October 2019



The Ritz-Carlton Okinawa



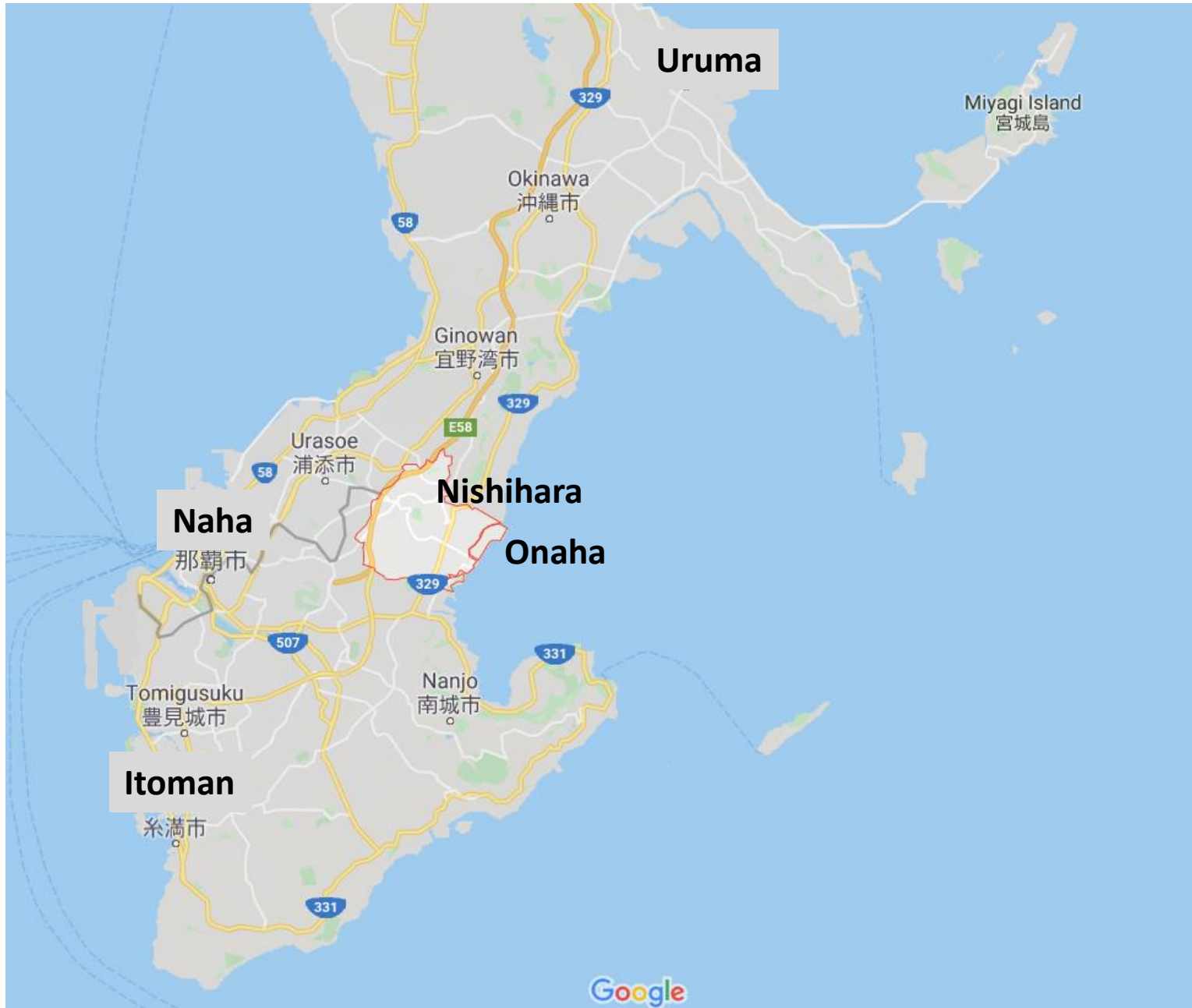
Arakawa Relatives in Okinawa



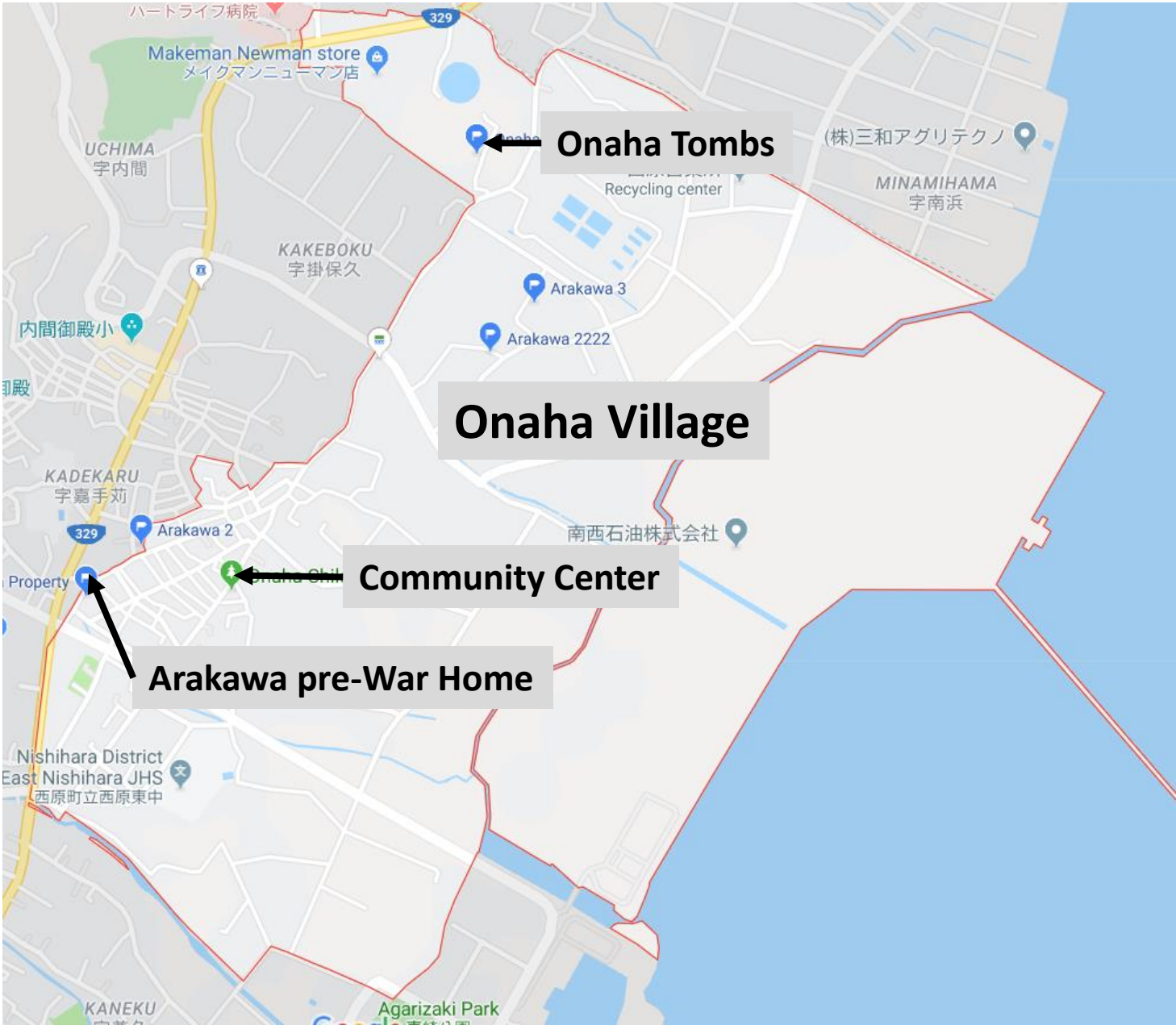
Uncle Takakazu



Aunt Kiyoko



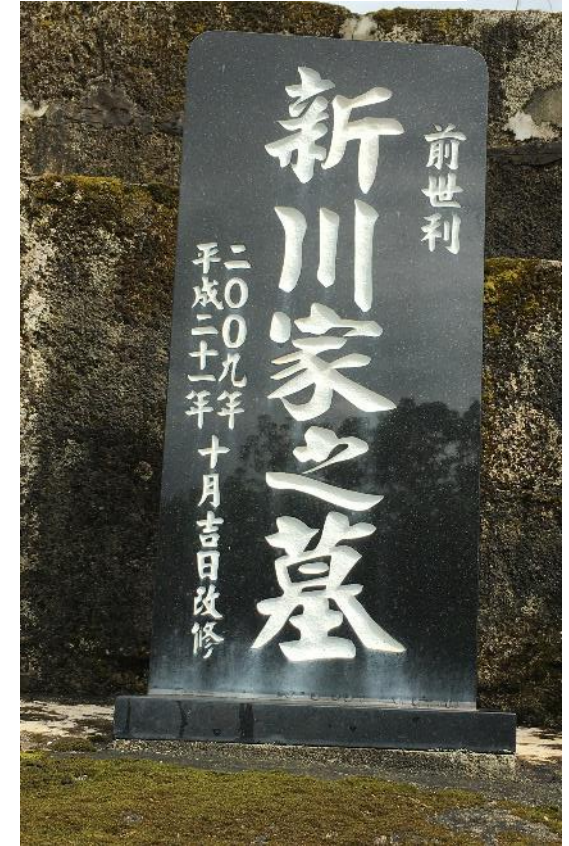
A Visit to Onaha, the Arakawa's Home Village



The Onaha Village Cemetery



The “Old” Arakawa Family Tomb, October 22, 2019



“Arakawa Home Tomb”
“Mii-She-Ri”
“Renovated 2009”

[Estimated Age:
~300 years]

The "Old" Arakawa Family Tomb, October 22, 2019



The “New” Arakawa Family Tomb, October 22, 2019



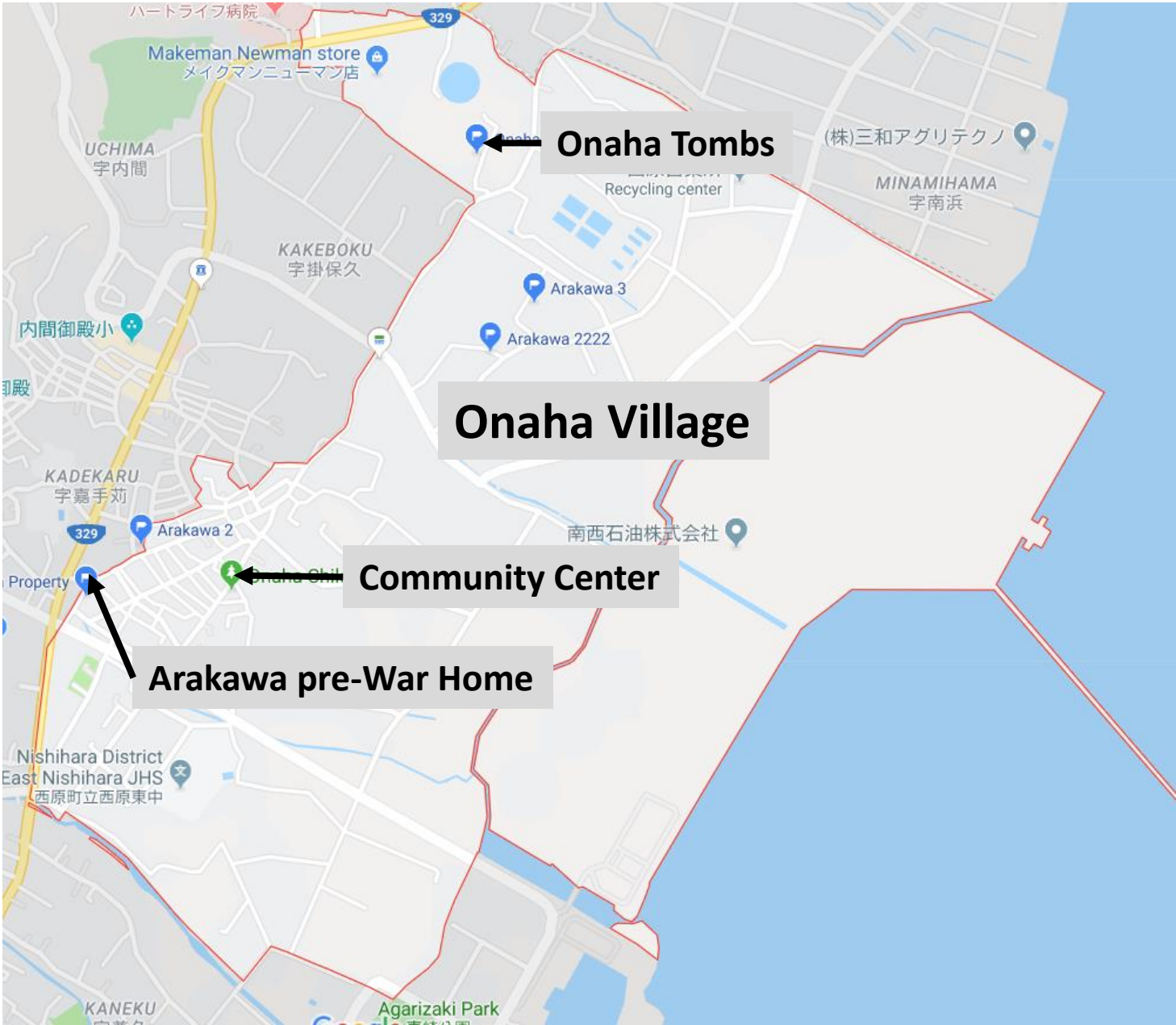
“Arakawa Home Tomb”
“Nii-Mii-She-Ri”
“Renovated 2009”

[Burials Since 1933]

Lunch in Uruma, October 22, 2019



A Visit to Onaha, the Arakawa's Home Village



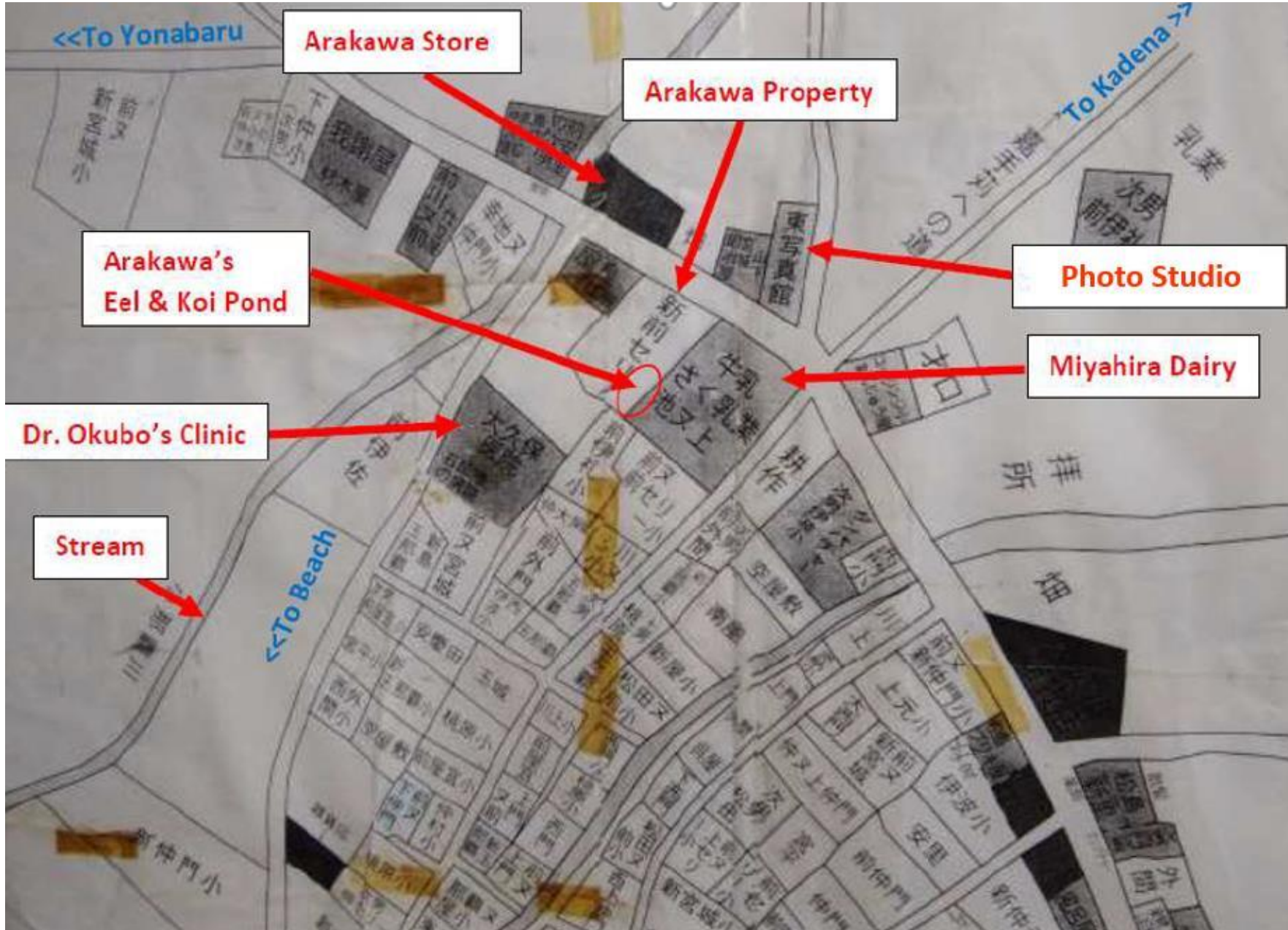
Onaha Community Center



Researching Onaha, March 2019



Pre-War Map of Arakawa's Onaha Neighborhood



Property Name is the “Yagou” of this branch of the Arakawa Family of Onaha: 新前セリ [pronounced “Nii-Mii-She-Ri”]

[Notes added to the map per The recollections of Susumu (Harry) Arakawa, who lived here from 1933 until evacuating in April, 1945.]

The Arakawa Home Property, 2019



The Arakawas at their Home Place



1940



2019

Working on Family History at the Arakawa Home



Nta Arakawa
1858-1941

Maka Arakawa
1867-1933



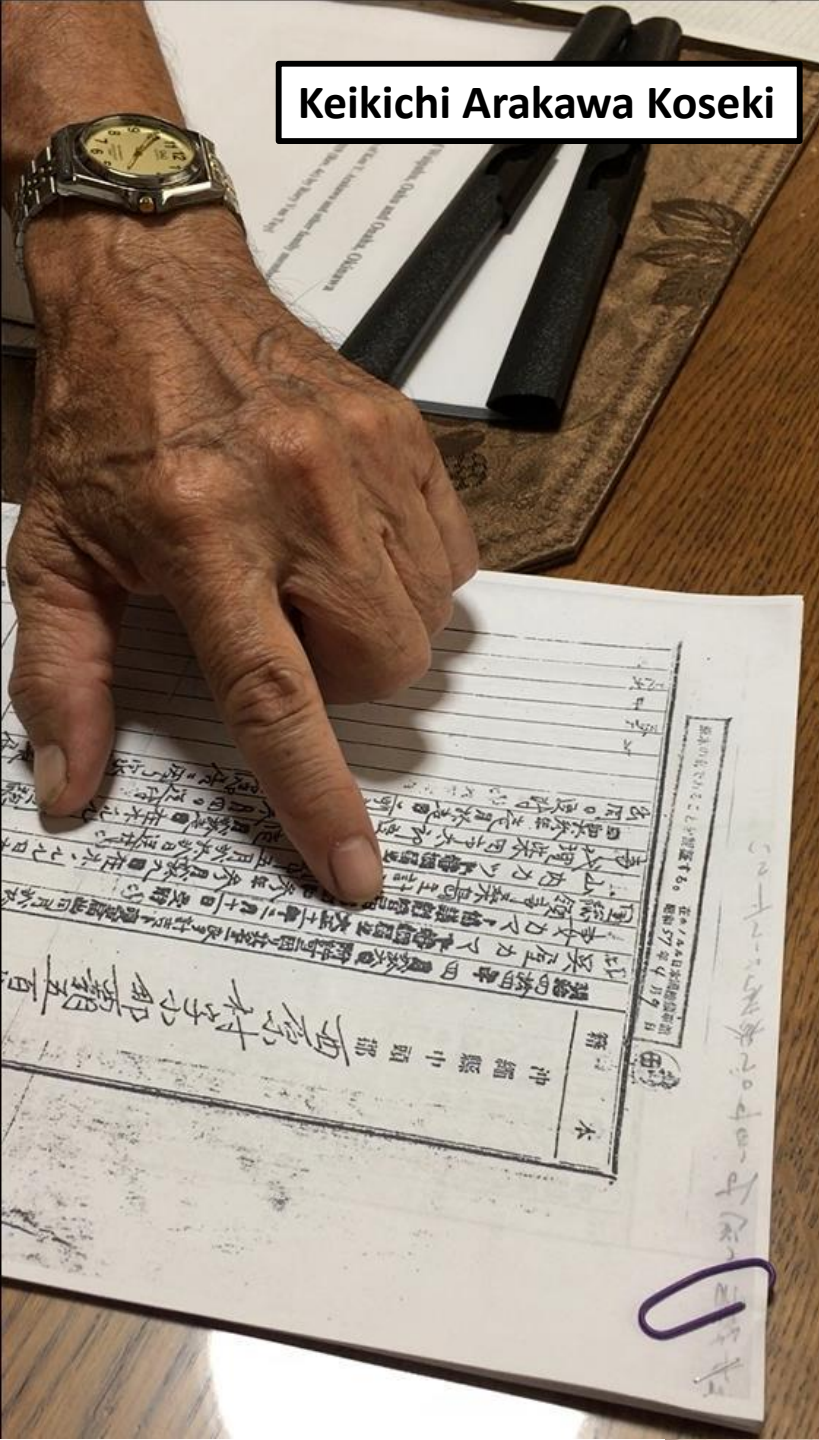


Keikichi Arakawa
1888-1951



Kame Arakawa
1898-1958

Keikichi Arakawa Koseki



新川家系図 The family tree of the Arakawa's

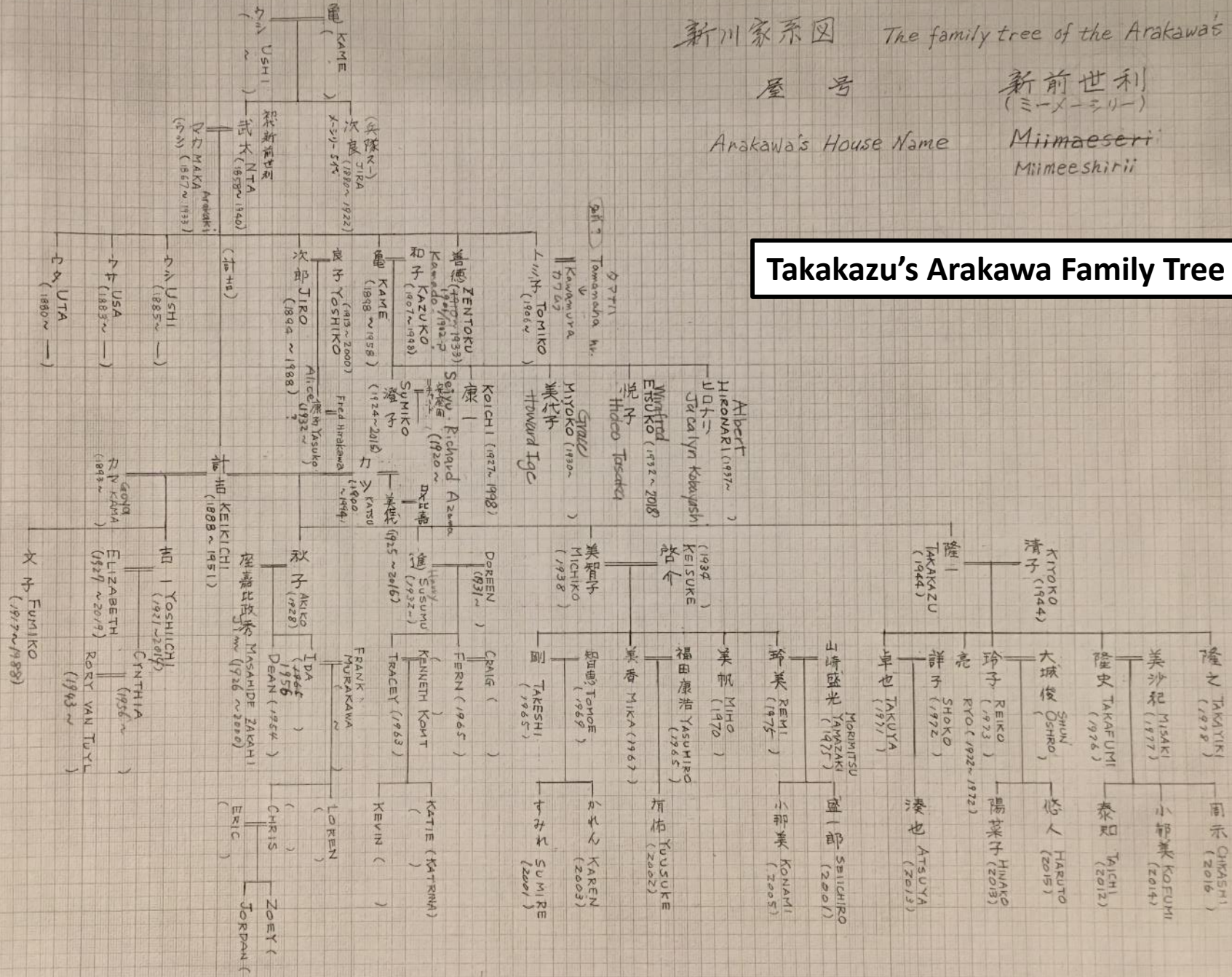
屋号

Arakawa's House Name

新前世利
(ミーメーシリー)

Miimaeseri
Miimeeshirii

Takakazu's Arakawa Family Tree



Kiyoko's Fabulous Buffet



With the Arakawa Family, October 22, 2019



The Historic Nakamura House, October 23, 2019



The Historic Nakamura House, October 23, 2019



Latrines/Pig Troughs

Tile Roof

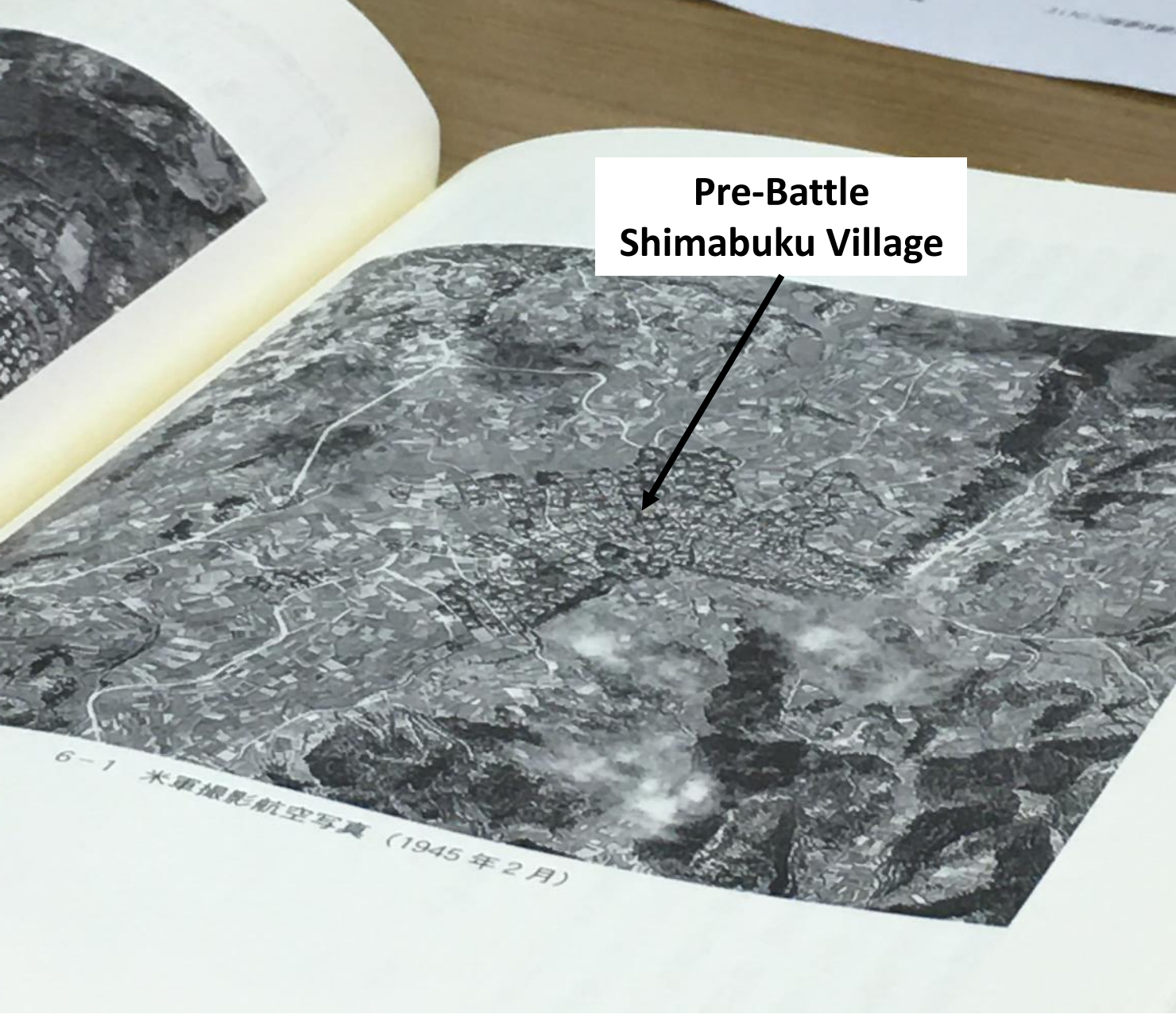
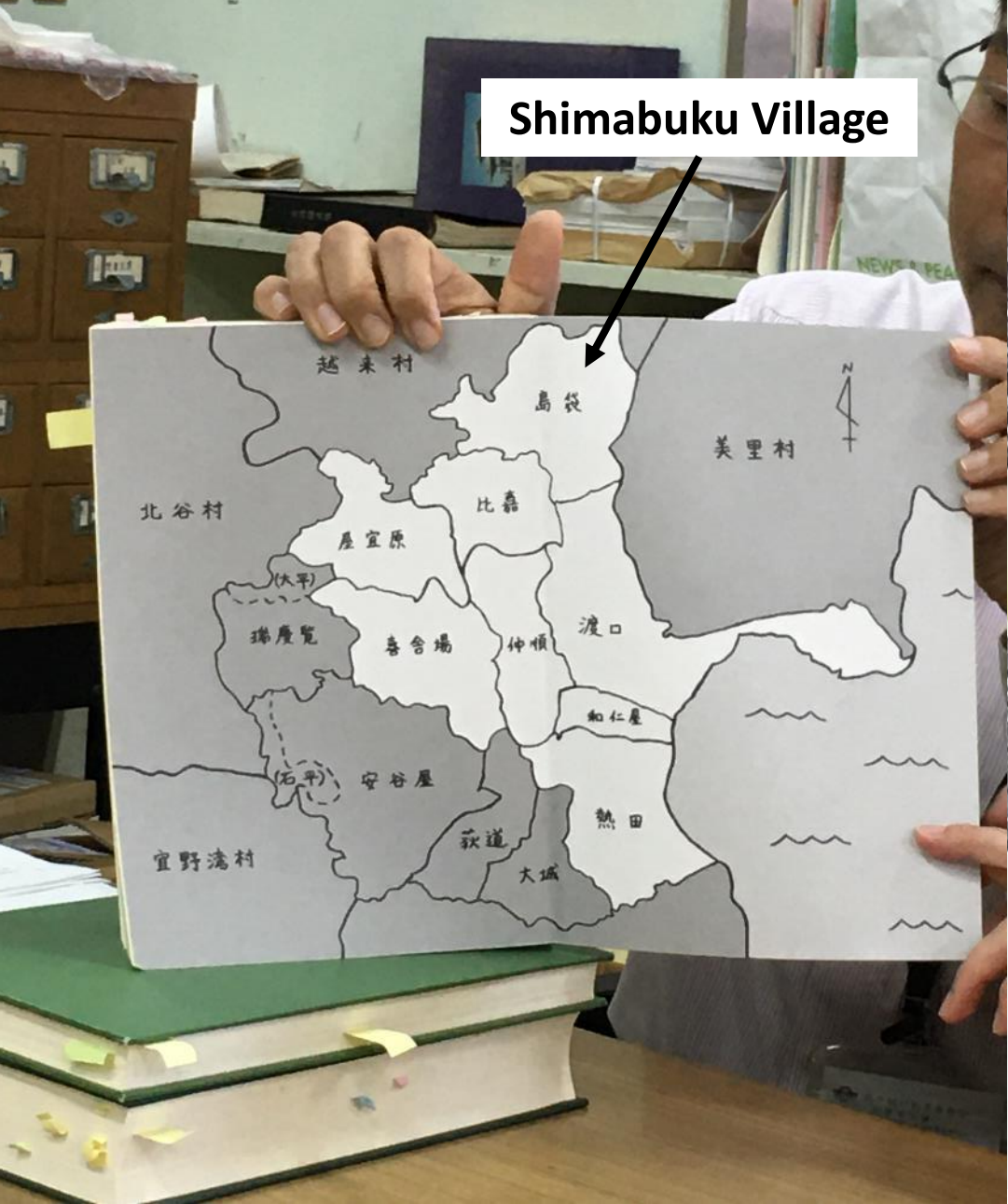
Nakamura House Kitchen



The Historic Nakamura House, October 23, 2019



Learning About Shimabuku, the Azama Family Village



Nakagusuku Medieval Fort



Field Trip to the North, October 24, 2019



At the Kanucha Resort

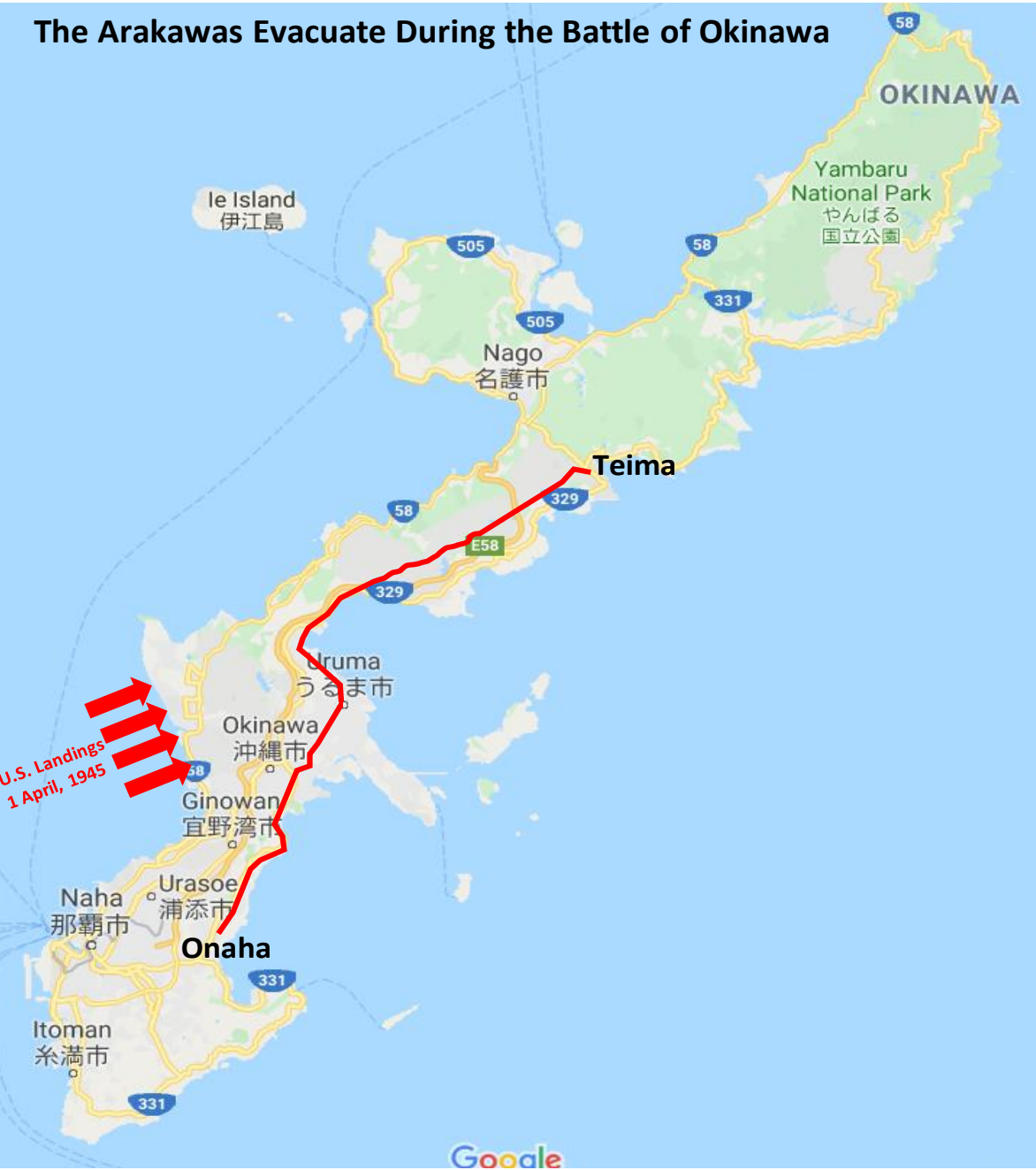


The Glass-Bottom Boat Ride



Teima Hills – The Family Refuge During the 1945 Battle

The Arakawas Evacuate During the Battle of Okinawa



The Celebration Lunch, October 24, 2019



THE RITZ-CARLTON

ARAKAWA FAMILY SELEBRATION

NEW MOON

新月

RUBY SNAPPER, TURNIP, SHIKUWASA

アカマチ カブ シークアーサー

CRESCENT MOON

三日月

ROASTED DUCK, HANDAMA, FRUIT JAM

鴨 ハンダマ 自家製コンポート

FIRST QUARTER MOON

上弦の月

VEAL SALTIMBOCCA, TARO POTATO, GRAPE

仔牛のサルティンボッカ 田芋 葡萄

FULL MOON

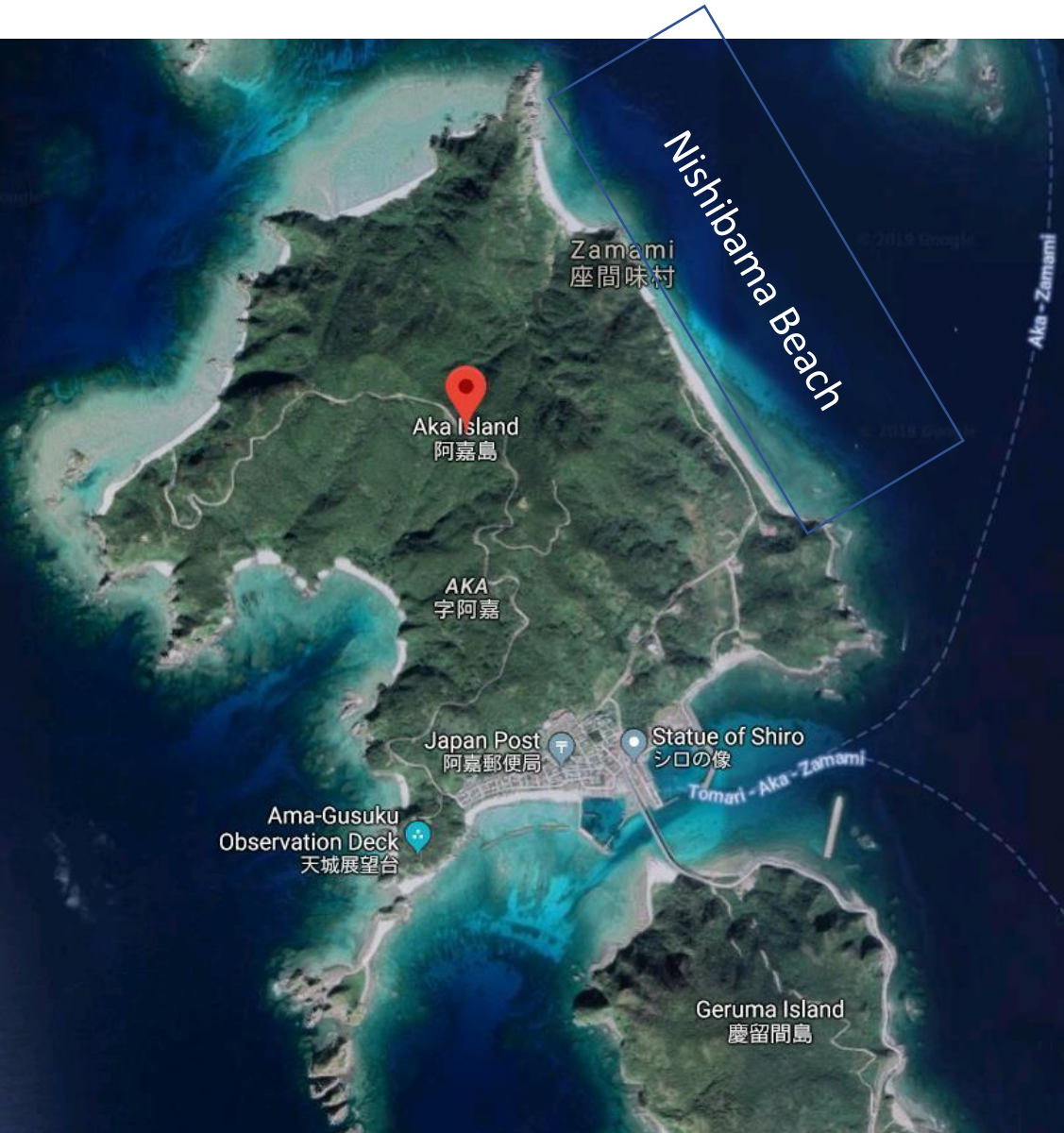
満月

CHESTNUT, PORCINI, OKINAWA MILK

栗 ポルチーニ 沖縄県産ミルク

24th October 2019

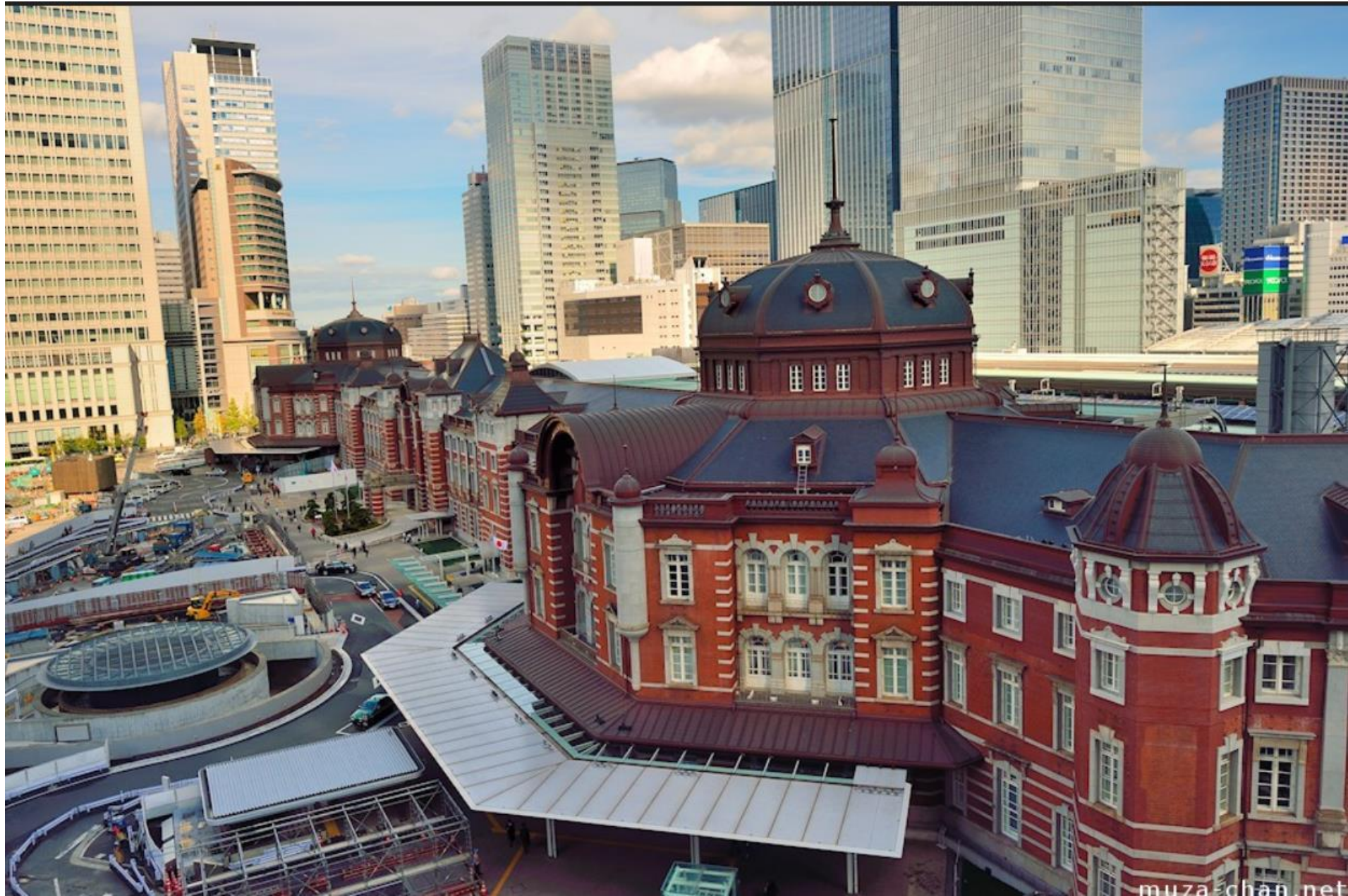
Aka Island, October 25, 2019



Aka Island, Nishibama Beach, October 25, 2019



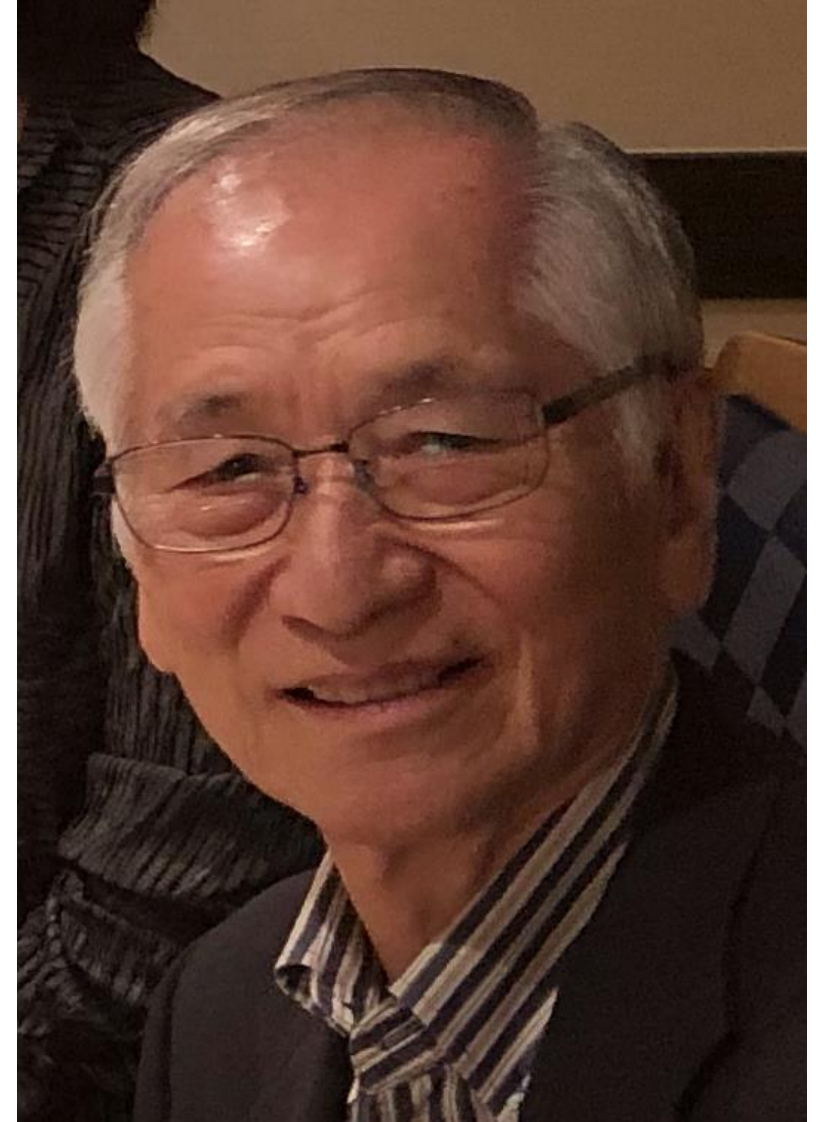
Tokyo, October 26-28, 2019



Arakawa Relatives in Tokyo



Aunt Michiko Arakawa Fukuchi



Uncle Keisuke Fukuchi

Shabu-Shabu Welcome Lunch



Shabu-Shabu Ingredients



Miho Explains it to Chef Kenny

At Lunch with the Family



Cynthia and Michiko Enjoy the Shabu-Shabu



After Lunch with the Family



At the Fukuchi Home, October 27, 2019



Keisuke



Michiko and Toshi

Sightseeing in Tokyo with Miho and Toshi, October 28, 2019



Toshi Explains Cynthia's Fortune

最後のスライド、お別れ



In Memoriam
Harry Susumu Arakawa
1932-2019

